

TGFF The Gibney Family FOUNDATION



2020 ANNUAL REPORT


CEO MESSAGE

2020 is now behind us. However, we still find that 2021 requires some resilience. In a quote by Two Blind Brothers, we learn that “Your greatest challenge is your greatest gift”. How we handle challenging times can come with unexpected blessings and can bring uplifting feelings. We often arise from our challenges humble, grateful, and with renewed awareness of our capabilities to become better.

The Foundation has seen this same resilience in the organizations that we serve. We have contacted many of them in the last few weeks to hear their stories and ask how they are doing since Covid became a reality one year ago. Almost without exception, they pointed to moments of great adversity and challenge as those times when they developed the relationships, gathered the knowledge, forged the character, and built the resolve that would lead to their survival. As a family, we also need to be resilient. Let’s not forget that we need one another and that we are better together than we are alone. We, too, can develop the relationships, gather the knowledge, and forge the character we need to empower our futures.

“You are always right where you need to be and going where you need to go. Things happen, we act, we adjust and life continues on. Learn, repeat and believe the words, “This too will pass,” and you will begin to know in your heart that even the most adverse experiences will somehow turn out the way they’re supposed to”. ~7Mindsets

Tracy Wasden
CEO



Adversity is a gift

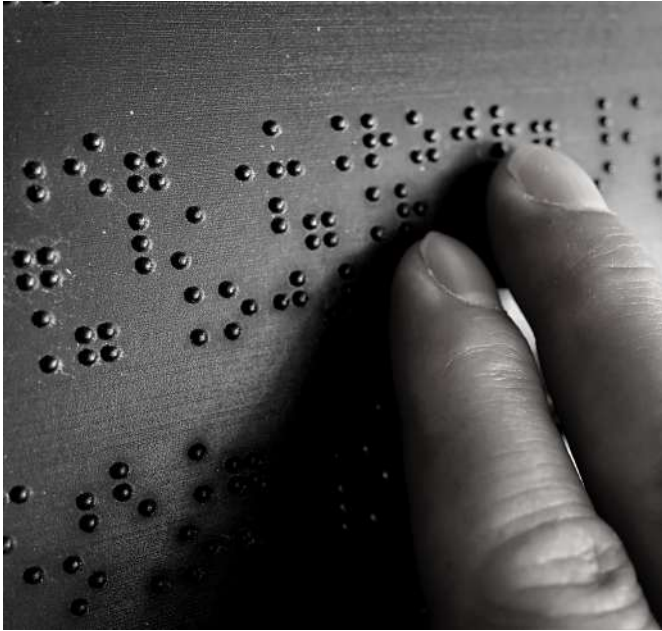
DONOR'S INTENT

"Embrace the concept of a narrowly focused mission as an opportunity to encourage a geographically scattered family to maximize successes as we work together toward a common goal. These unified efforts and resulting successes will allow passion to grow. The narrow focus will also honor the dedicated and inspirational efforts of the Donor's mother and aunt who spent many hours enabling blind children to read through their efforts to translate children's books into Braille."

~Al Gibney

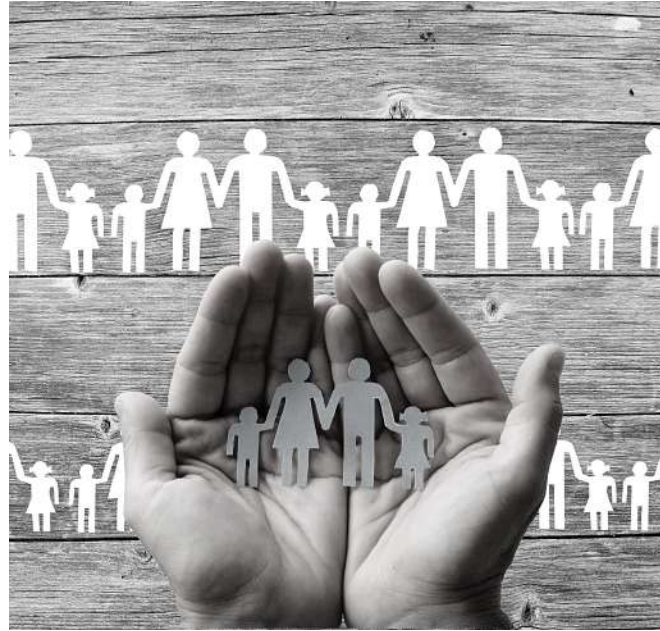


AREAS OF IMPACT



BLIND & VISUALLY IMPAIRED

TGFF strives to empower visually impaired individuals with independence, employment, and quality of life which we strongly feel that all should be able to enjoy.



FAMILY & CHILDREN SUPPORT

TGFF recognizes the importance of mental health, safe living conditions, food security, and other factors needed to support and strengthen families in our communities.



ADAPTIVE TECHNOLOGY & DISABLED SUPPORT

TGFF helps organizations put smiles on faces and confidence in souls to reach for the stars through sports and recreation and furthering independence through adaptive technology solutions.

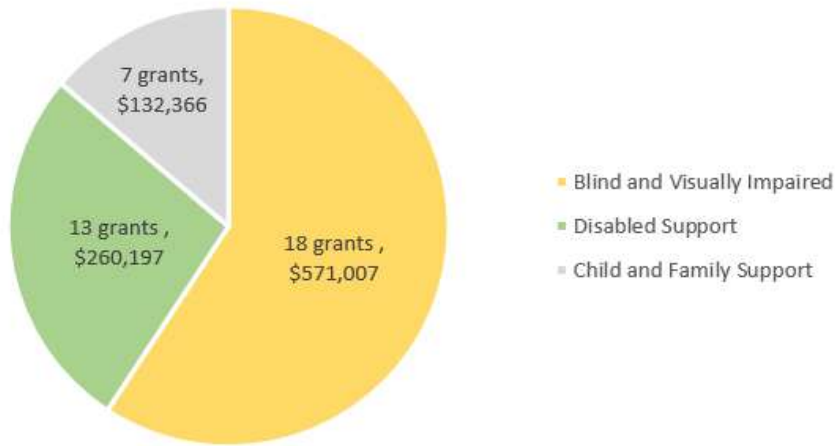
GIVING STATISTICS & TRENDS

TOTAL AMOUNT AWARDED IN

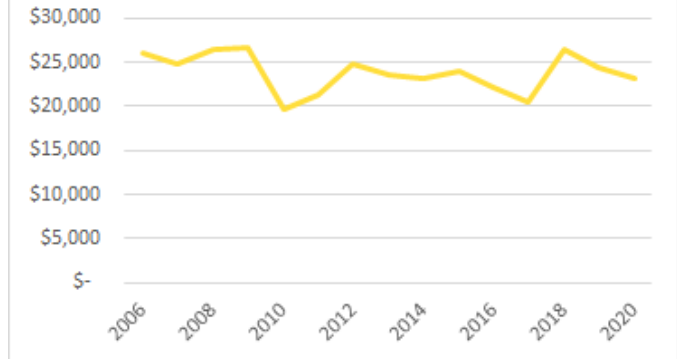
2020: \$1,094,726

*Includes Grants, Donations, Covid-19 Relief Grants, and contributions to TGFF's Donor Advised Fund

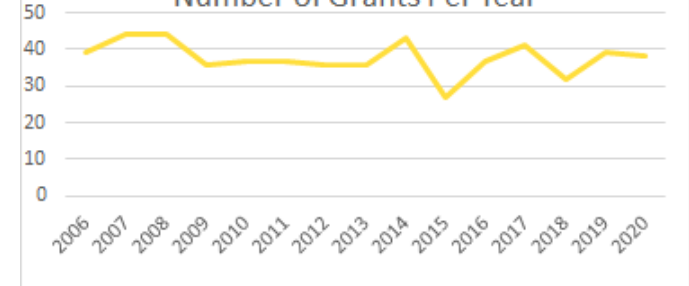
Areas of Focus



Average Grant Amount



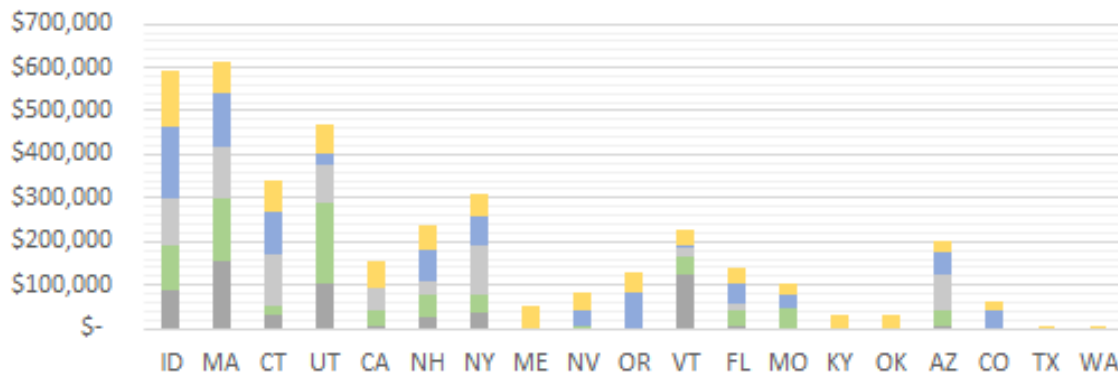
Number of Grants Per Year



Yearly Grant Amount by State

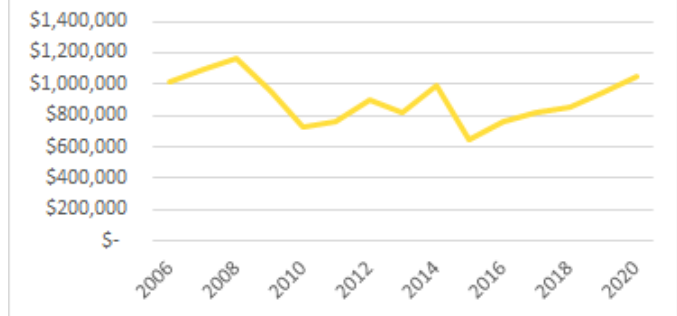
*sorted by largest to smallest amount in 2020

2016 2017 2018 2019 2020



Total Granted by Year

Grants and Donations included minus contributions to the Donor Advised Fund



BLIND & VISUALLY IMPAIRED

**AMERICAN PRINTING HOUSE FOR THE BLIND
LOUISVILLE, KY**

\$30,000

Support APH to gather and share information about critical transition programs within one online location - ConnectCenter Transition Hub. It is their goal to coalesce each of these programs into an accessible, user-friendly database, which will also feature multi-media content and anecdotal personal experiences.

**EARLE BAUM CENTER OF THE BLIND
SANTA ROSA, CA**

\$25,000

Enable Earle Baum Center to perform more intakes and critical initial services to clients to help them move forward on their path to independence.

**IDAHO EDUCATIONAL SERVICES FOR THE DEAF AND
THE BLIND FOUNDATION
GOODING, ID**

\$2,400

Provide funding to IESDB to send campers a "Camp in a Box" filled with materials and activities to take part in a virtual summer camp. This is a pivot from the original grant request to support an overnight summer enrichment camp for students.

**LIGHTHOUSE VISION LOSS EDUCATION CENTER
SARASOTA, FL**

\$35,000

Enable Manasota to build upon the services children ages 6-13 receive from the public school system by Teachers of the Visually Impaired, specifically addressing the Expanded Core Curriculum shortfalls.

**MAB COMMUNITY SERVICES, INC.
BROOKLINE, MA**

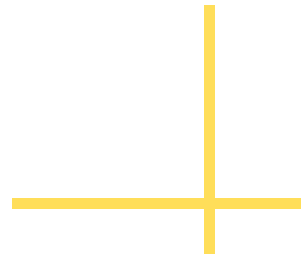
\$50,000

Support the expansion of their existing volunteer program to become a statewide program, reaching a broader population of seniors who need assistance.

**NATIONAL BRAILLE PRESS
BOSTON, MA**

\$18,350

Fund the Touch of Genius Award which supports the development of affordable braille and tactile literacy technology solutions for the blind and visually impaired.





**NEVADA BLIND CHILDREN'S FOUNDATION
HENDERSON, NV**

\$45,000

Support NBCF to expand its services to provide children who are blind or visually impaired and their sighted siblings a full-day education option from 7 a.m. to 5 p.m., Monday through Friday, with extended hours available for working families.

**NEWVIEW OKLAHOMA
OKLAHOMA CITY, OK**

\$30,000

Support the enhancement capabilities in the area of technology and tele-medicine to serve existing and new clients more effectively. New software platforms will enable staff to perform remote training and prepare clients for the workforce.

**NORTHWEST ASSOCIATION FOR BLIND ATHLETES
VANCOUVER, WA**

\$20,000

Support the hiring of the organization's first Marketing & Communication's Manager. This position will create additional development capabilities, devise and launch innovative campaigns to raise awareness, and assist in outreach efforts to empower more individuals and families to become involved in programming.



**OUR SPACE, OUR PLACE
BOSTON, MA**

\$5,000

Support Our Space, Our Place with the ability to offer a theater camp, an Audio Editing workshop, and a Website Development program using HTML. These 3 short programs aim to improve the students' self-confidence, computer, public speaking and team building skills.

**RESOURCE
BURLINGTON, VT**

\$30,935

Assist with a virtual weekly retreat for blind and visually impaired young people to connect in conversation and educational themes through guest speakers, student facilitators and peer learning groups. This will greatly impact those already vulnerable to social isolation.

**SOUTHERN ARIZONA ASSOCIATION FOR THE VISUALLY IMPAIRED
TUCSON, AZ**

\$25,000

Support SAAVI as they become the first Structured Discovery Rehabilitation Center in Arizona. This will teach independence to individuals who are blind and visually impaired.

THE BLIND CHILDREN'S CENTER, INC. **\$35,000**
LOS ANGELES, CA
Support for their Family Worker program, who interface directly with parents and caregivers to guide them through the educational process and medical process.

THE IRIS NETWORK, INC. **\$50,000**
PORTLAND, ME
Next Gen Grant: Enable Iris Network to improve employment outcomes for individuals who are blind or visually impaired by enhancing their staff's skills in assistive technology. Additionally, funds will provide appropriate technology equipment or software for clients for their ongoing use.

THE RESEARCH FOUNDATION FOR SUNY, THE COLLEGE AT BROCKPORT **\$9,998**
BROCKPORT, NY
Enable Camp Abilities to send their B/VI campers materials and activities in a "Camp in a Box" for a virtual summer camp experience. This is a pivot from their original request to support their 25th anniversary as they attempt to break the Guinness Book of World Records for the world's longest goalball game.

VERMONT ASSOCIATION FOR THE BLIND AND VISUALLY IMPAIRED **\$5,000**
BURLINGTON, VT
Provide an incentive for graduates of UMASS Vision Studies Masters program by offering tuition reimbursement. By covering the remaining portion of tuition, VABVI hopes to attract more certified TVIs and therefore fill the need for additional teachers.

VISUALLY IMPAIRED ADVANCEMENT **\$42,130**
BUFFALO, NY
Support a pivot from their original grant project to enable VIA to focus on the increased demand and need of their 211 helpline system. Additionally, funds to increase the awareness and solutions to improve accessibility in the workplace, marketplace, and educational system with the goal of expanding access and employment opportunities.

VISIONSERVE ALLIANCE **\$30,000**
BRENTWOOD, MO
Support Reframing Aging & Vision Loss in a three year plan to continue a national coalition of 17+ organizations and more individual advocates to focus on the issues resulting from Aging & Vision Loss.



CHILD AND FAMILY SUPPORT



**BAGS OF LOVE
EUGENE, OR**

\$15,000

Assist Bags of Love to "Fill the Gaps" and provide necessities and comfort items to children whose lives are impacted by abuse, neglect, poverty, and homelessness. A portion of these funds will also assist with utilities.

**CAPSA
LOGAN, UT**

\$17,565

Support to increase awareness activities and community education about domestic violence, sexual abuse, and the resources CAPSA offers, with a focus towards those who are disabled.

**THE CHILDREN'S CENTER
VANCOUVER, WA**

\$3,301

Enable the organization to purchase supplies to make 100 Heavy Helper bears that will comfort children with sensory issues and anxiety.

**THE CHILDREN'S HOME SOCIETY OF IDAHO
BOISE, ID**

\$35,000

Enable CHS to meet the critical need of attracting and retaining additional clinicians/therapists in order to serve more children in need.

**CAMP HOBE', INC.
SALT LAKE CITY, UT**

\$1,500

Funds enable Camp Hobe' to hire a consultant to phase in the implementation of a staff structure to the all-volunteer organization.

**HEALING MEALS COMMUNITY PROJECT
BLOOMFIELD, CT**

\$40,000

Support to hire a full-time Grant Writer to enable them to reach out to more funding sources.

**IDAHO YOUTH RANCH, INC.
BOISE, ID**

\$30,000

Enable Idaho Youth Ranch to accelerate their services of equine-assisted psychotherapy to youth and their families.

ADAPTIVE TECHNOLOGY & DISABLED SUPPORT

ABILITY 1ST UTAH LOS ANGELES, CA

\$9,000

Enable Ability 1st to provide technology devices to clients to assist with distance learning during the COVID-19 pandemic. A portion of the grant funding will also support the purchase of a new transit van.

ACHILLES, CONNECTICUT CHAPTER BRANFORD, CT

\$5,932

Continued support for the newly hired (and previously funded) Director of Development.

CAMP SUMMIT DALLAS, TX

\$5,000

Provide funds for the Campership and Financial Assistance project which eliminates the financial barriers individuals with disabilities often face and upholds a long-tradition of never turning a camper away due to an inability to pay.

COMMON GROUND OUTDOOR ADVENTURES LOGAN, UT

\$25,000

Provide emergency COVID relief funds to support the Executive Director and Activity Coordinator's salaries for 3.5 months to prevent the organization from fully shutting down. This will enable them to maintain contact with clients and continue fundraising for future programming needs.

EYE TO EYE, INC. NEW YORK, NY

\$20,000

Enable Eye to Eye to serve 200+ middle school students with learning disabilities through projects that intentionally build social and emotional skills.

HIGHER GROUND SUN VALLEY, INC KETCHUM, ID

\$35,000

Assist Higher Ground in creating multiple opportunities for children who are deaf, hard of hearing and/or blind or visually impaired to engage in therapeutic recreation, socialization, and development of skills through single and multi-day programs.





INCLUDEABILITY, INC. **\$10,000**
BOISE, ID
Support IncludeAbility in underwriting a social media promotional campaign for the completed feature film, “Making Sense” which will premiere in 2021.

NATIONAL ABILITY CENTER, INC. **\$15,000**
PARK CITY, UT
Provide NAC with funds to support scholarships for 120 individuals so they can participate in NAC recreational programs.

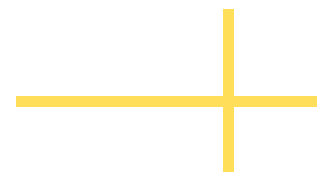
NORTHEAST DEAF AND HARD OF HEARING SERVICES, INC **\$30,000**
CONCORD, NH
Assist NDHHS in expanding their early childhood services throughout the state of NH as well as the creation of a Parent Infant Program for families of deaf/hard of hearing children.

NORTHEAST PASSAGE, **\$25,000**
PROGRAM OF THE UNIVERSITY OF NEW HAMPSHIRE
DURHAM, NH
Continue supporting individuals with physical disabilities to experience improved emotional and physical well-being through Recreational Therapy.

OAK HILL **\$25,000**
HARTFORD, CT
Enable Oak Hill to create a Centers Connect Coordinator position to assist and direct clients to all the services offered, both internally and externally.

RIDE FOR JOY THERAPEUTIC RIDING PROGRAM, INC. **\$18,000**
BOISE, ID
Funds will go towards the design and construct a therapeutic sensory trail. The trail will provide both non-visual sensory elements and a wider variety of visual sensory experiences.

SMART LIVING, LEARNING & EARNING WITH AUTISM **\$27,265**
EUGENE, OR
Next Gen Grant: Help to significantly advance competitive employment opportunities for students and others with disabilities. HIRE (Help Individuals Reach Employment)-Me: Using ePortfolios to help individuals with disabilities find meaningful and better paying employment opportunities.



COVID-19 RELIEF GRANTS

Many of our grantees faced unexpected financial constraints due to the onset of Covid-19. They needed technology solutions for remote work, alternative plans for fundraisers and continued support from their partners. TGFF is proud to have supported our grantees during their greatest need.

BLIND CHILDREN'S CENTER

FLORIDA AGENCIES SERVING THE BLIND

FUTURE IN SIGHT

THE IRIS NETWORK

LIGHTHOUSE VISION LOSS EDUCATION CENTER

MAB COMMUNITY SERVICES, INC

NATIONAL BRAILLE PRESS

NATIONAL FEDERATION OF THE BLIND

NEVADA BLIND CHILDREN'S FOUNDATION

NORTHWEST ASSOCIATION OF BLIND ATHLETES

OAK HILL

SOUTHERN ARIZONA ASSOCIATION FOR THE VISUALLY IMPAIRED

THE CARROLL CENTER

VERMONT ASSOCIATION FOR THE BLIND

VISIONSERVE ALLIANCE

VISUALLY IMPAIRED ADVANCEMENT



Thank you for this wonderful support. It certainly has been a wild ride, and this shot in the arm certainly helps! Most importantly, I have never had the pleasure of seeing a family foundation like yours that truly looks at every angle to help it's grantees...not just in funds but in spirit and advice. I am very grateful for your friendship and support to NBP. ~ Brian Mac Donald, National Braille Press

FAMILY DONATIONS

Family members have the opportunity to give small discretionary donations to organizations of their choosing. Below are the organizations who received a donation

"I can't thank the entire Gibney Family enough for your generosity of resources and spirit. Knowing you are thinking of the well being of the programs and the people speaks to the core belief of your family-that people and partnerships lead all of your decisions. I continue to be impressed. Thank you."
David Brown, MAB Community Services



Ability 1st Utah
Achilles, CT Chapter *
Arizona Center for the Blind and Visually Impaired
Best Buddies, Utah Chapter
Girls on the Run, Capital Region
Healing Meals Community Project
Himalayan Cataract Foundation *
Home Share Vermont
MAB Community Services, Inc. *
Nevada Blind Children's Foundation *
NewView Oklahoma *
Northeast Deaf and Hard of Hearing Services, Inc
Northwest Association for Blind Athletes *
Oak Hill *
Proctor Academy
Seedlings Braille Books for Children *
Ski for Light, Inc. *
Southern Arizona Association for the Visually Impaired *
Spectrum Youth and Family Services
Steps to End Domestic Violence
Sun Sounds of Arizona - Tucson *
The Committee on Temporary Shelter
Vermont Adaptive Ski and Sports
Vermont Association for the Blind and Visually Impaired *

*Denotes a Blind and Visually Impaired Organization

BOARD OF DIRECTORS

Tracy Wasden, President
Frank Gibney, Founding Member
Rob Whittaker, Vice President
Sue DiFatta, Corporate Secretary
Brian DiFatta, Treasurer
Diane Muhr
Ken Wasden
Joleen Widmark

Emeritus:

Joan Whittaker, Founding Member
Sue Young, Founding Member

TGFF FAMILY

Second Generation:

Chris and Joan Whittaker
Stan and Sue Young
Frank Gibney and Diane Muhr

Third Generation:

Jerry and Jennifer Boyd
Ken and Tracy Wasden
Adria Sumsion
Rob and Molly Whittaker
Brian and Sue DiFatta
Rob and Joyana Samsel
Todd Young
Andy and Lisa Young

Fourth Generation:

Jackson and Celeste Beazer
Mason and Kenzie Summers
Cache and Aubrey Summers
Chris and Natalie Hansen
Tate and Mallory Bair
Tyler Samsel
Bailey Dyson
Brayden and Ashlyn Weeks
Allison and Dillan Rowley
Ryan Sumsion
Madison Whittaker
Ethan Sumsion
Nathan Wasden
Lillian Young

STAFF

Tracy Wasden, Chief Executive Officer
Sue DiFatta, Chief Operating Officer
Joleen Widmark, Chief Grant Officer
Brian DiFatta, Treasurer
Molly Whittaker, Logistics Coordinator
Allison Rowley, Publication and Design Specialist
Madison Whittaker, Family Correspondent

GRANT OFFICERS

Joleen Widmark, Chair
Frank Gibney
Chris Whittaker
Tracy Wasden
Sue DiFatta
Diane Muhr
Molly Whittaker
Celeste Beazer
Mallory Bair





FOR MORE INFORMATION, VISIT: WWW.TGFF.ORG

PO BOX 633, Meridian, ID 83680 • 802-846-7567 •